

# Herbicide tolerance of natives

**Trays on left have normal rate of herbicide.**

**Trays on right have 4 times normal rate.**

**40 species per tray**

**Seedlings 6 weeks old when sprayed.**

**Assessed 12 weeks after spraying.**



# Glyphosate (Roundup) 500 mL/ha



# Glyphosate (Roundup) 2000 mL/ha



# Dalapon 5 kg/ha



# Dalapon 20 kg/ha



# Diquat 1 L/ha



# Logran 40 g/ha



HG6059

# Logran 160 g/ha



HG6060



# Verdict520 100 mL/ha



# Verdict520 400 mL/ha



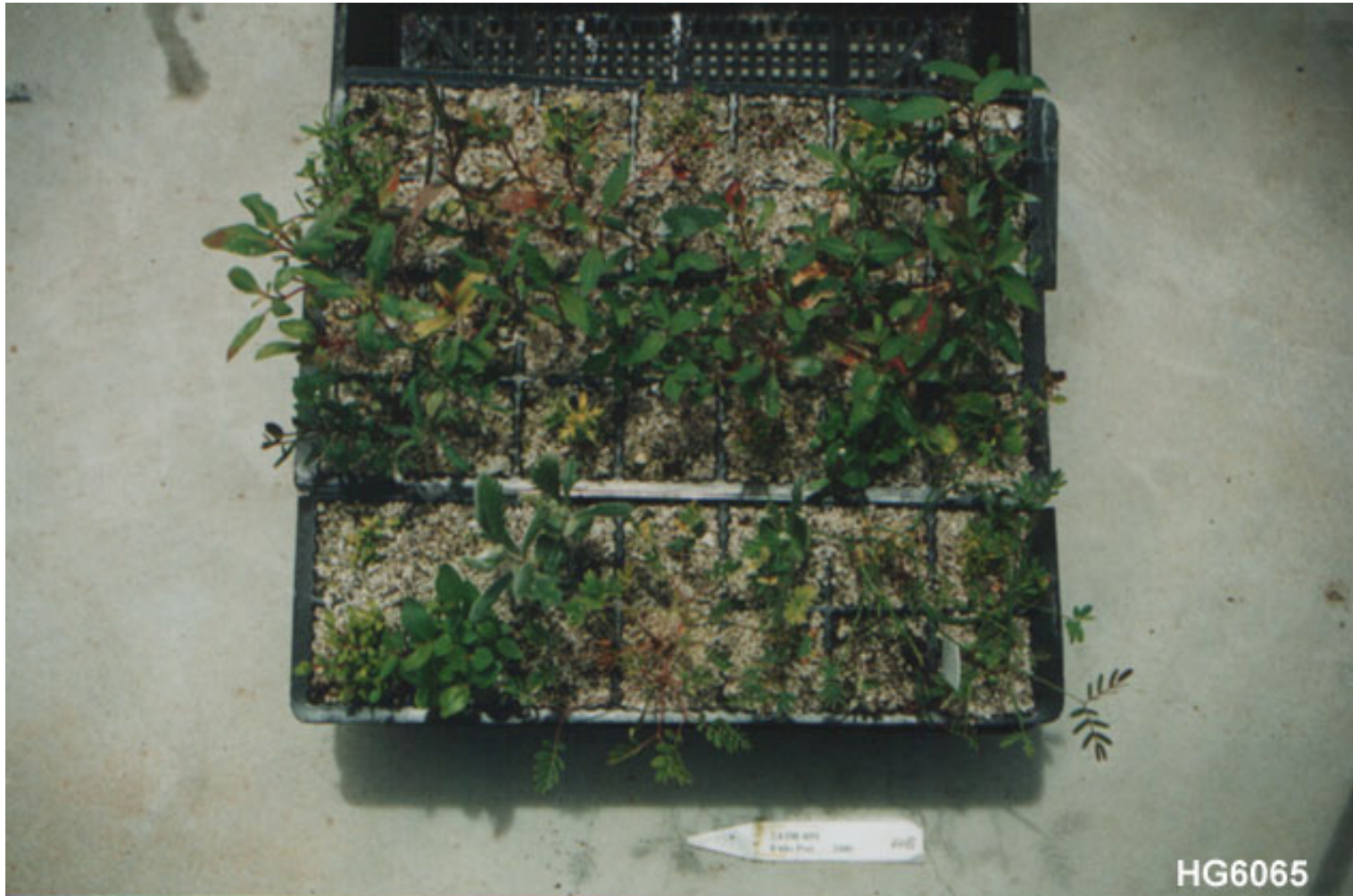
# 2,4-D 1 L/ha



# 2,4-D 4 L/ha



# 2,4-DB 2 L/ha



HG6065

# 2,4-DB 8 L/ha



# Lontrel 250 mL/ha



HG6067

# Lontrel 1 L/ha



HG6068



# Sources of information



- Label
- Material Safety Data Sheet - MSDS
- Regulatory requirements
- Scientific literature
- Promotional material
- Media
- Regurgitated material and hearsay
- All sources are biased

# Selectivity

