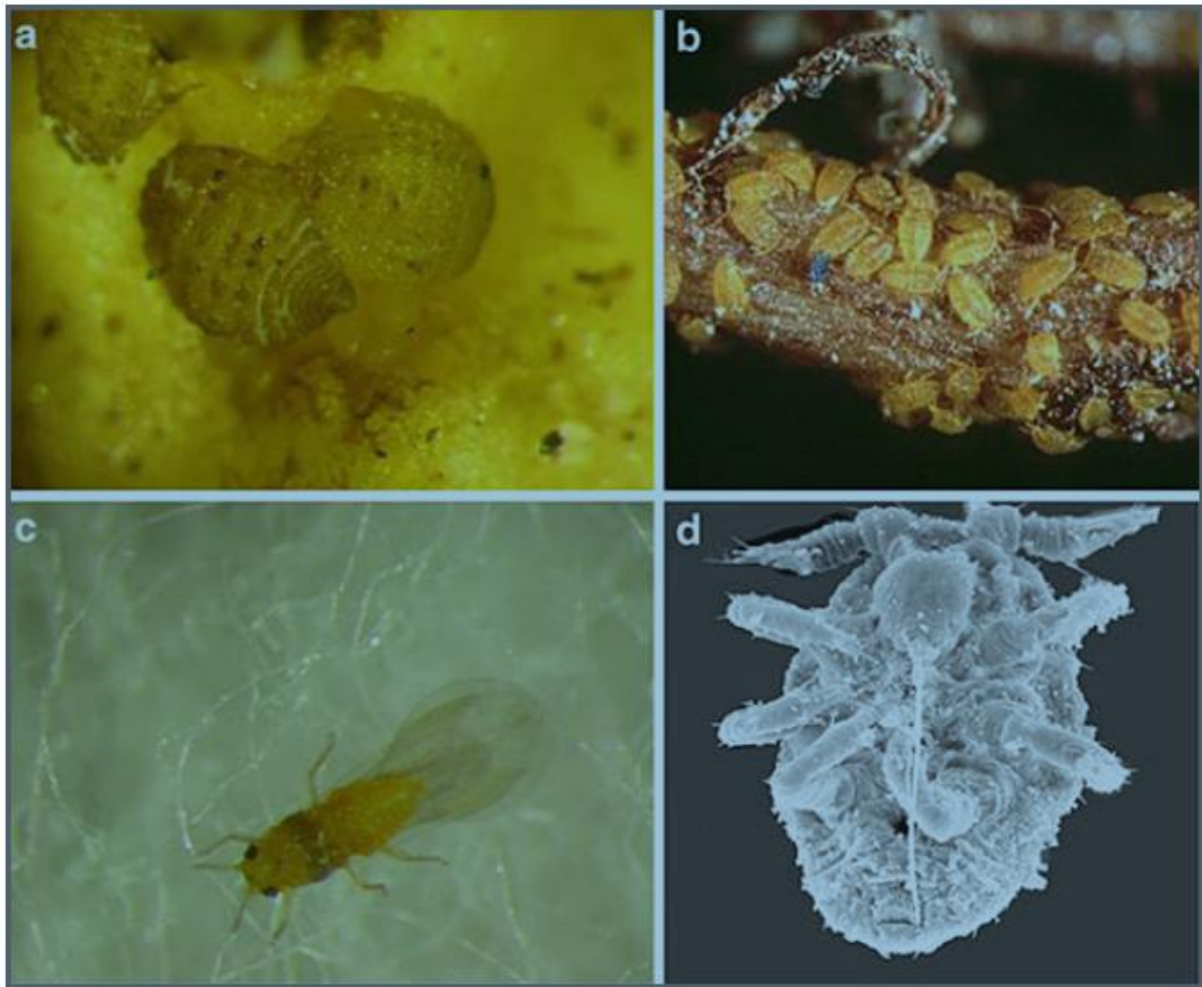


Grape Phylloxera

Daktulosphaira vitifoliae FITCH

Phylloxeridae family



(a) Eggs being oviposited by adult apterous *Daktulosphaira vitifoliae* . (b) First instar *Daktulosphaira vitifoliae* nymphs or 'crawlers' on lignified root of *Vitis vinifera* . (c) Winged (alate) adult *D. vitifoliae* . (d) Scanning electron micrograph of first instar *D. vitifoliae* showing stylet

Courtesy Kevin Powell



Three types of grapevine phylloxera induced galls: (a) leaf galls on 'resistant' grapevine rootstock foliage, (b) yellow hook -shaped nodosities produced on both non-lignified roots of *Vitis vinifera* and *Vitis* sp., (c) swellings or tuberosities produced on *V. vinifera*.
Courtesy Kevin Powell



Visual symptoms of canopy decline and premature yellowing of phylloxera-infested ungrafted *Vitis vinifera*

Courtesy Kevin Powell

References:

Powell, K.S. (2012). Chapter 10 in Noubar J. Bostanian, N.J., Vincent, C. and Isaacs R. (Editors) *Arthropod Management in Vineyards: Pests, Approaches, and Future Directions*. Springer Dordrecht Heidelberg New York London.

Acknowledgments:

Collated by HerbiGuide. Phone 08 98444064 or www.HerbiGuide.com.au for more information.